

## A patio of vast proportions

Jim and Cole Pofahl take outdoor spaces to a new level

A second look at the garden of  
Doug and Barbara Rains

Page E6

Expect great things at the LCHBA Home  
Improvement and Lifestyles Show

Page E8

See featured home on pages  
E2-E3

# Featured Home: 7053 Calle Estancias



Offering those who enter the home an enticing view of the back patio, Jim and Cole Pofahl included many small windows in the entry's large rock wall.



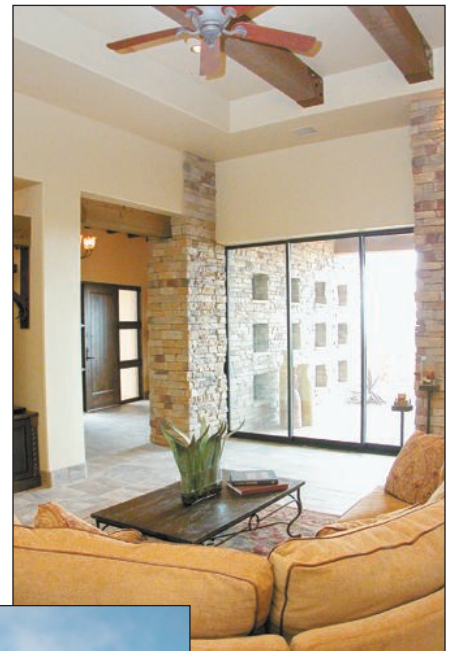
With the push of a button, the home's glass walls disappear, transforming the main living area into a comfortable outdoor space.

FEATURED HOME PHOTOS  
BY STEVE MACINTYRE

With the look of a luxury hotel, the master bathroom includes a large vanity and jetted tub, with a garden just outside the large walk-in shower.



The home's gourmet kitchen includes custom wood flooring, a custom-built range top and hood as well as granite countertops and a large island.



Whether the home's disappearing glass walls are open or closed, the main living area has a very open feel.



Found in the Picacho Mountain subdivision, this home has great valley and mountain views.



**MORRISON**  
PLUMBING | APPLIANCES | HARDWARE

"Experience Las Cruces' Best Kept Secret" Visit our new 10,000 sq.ft. Destination Showroom located at 311 Southgate Court (Southgate Court and Amador). 575.523.6494

*Appointments are appreciated.*

# Pushing the envelope on patio design

This home's main living area changes from an indoor to outdoor space with the push of a button

By **BETHANY CONWAY**  
The Las Cruces Bulletin

Possibly the greatest trend in residential construction today is developing outdoor spaces into one of the most popular areas of a home. In Las Cruces, the beautiful weather affords many opportunities to dine outdoors while enjoying sunsets over the Organ Mountains or host a backyard barbecue over the Memorial Day weekend.

When building their first home in the city, Jim Pofahl and his son Cole Pofahl knew they wanted to take outdoor spaces to a new level at 7053 Calle Estancias. The result was a showcase home that received rave reviews all around.

Imagine transforming a home's great room into an outdoor space with the push of a button. This is possible with the custom disappearing glass walls that turn the great room and dining room of Jim and Cole Pofahl's Picacho Mountain home into a patio of unimaginable proportion.

After seeing the walls used in a showcase home in Scottsdale, Ariz., they were "wowed" by the feel it brought to the home and decided it was a great fit considering the climate in Las Cruces. Sparing no expense on the home's outdoor patio areas, they included the same elements indoors and out to create a uniform look.

"That was one of the biggest things that we wanted - to get it to the point where the outside areas had a finish that was similar to the inside rather than seeing them as an afterthought or the last thing you get to," Cole Pofahl said.

Of course, installing the walls posed its own challenges, but with the help of architect Jason Clark, the home came together with flawless precision.

"Regardless of how many details and pictures we might have had to show to Jason, it was his ability to put it down on paper that made it all come together," Jim Pofahl said.

The first stepping stone was creating a pocket in the great room that the doors could recede into, which would also hide the motor. They conquered this with a dominating double fireplace covered in cultured stone that not only conceals the doors, but also blends the indoor and outdoor space.

"It is a great architectural element in the room, and it creates warmth for the entire area," Jim Pofahl said.

In order to tempt those entering the home, they also included an entire wall separating the entry from the rest of the home, which is covered in cultured stone and littered with small square windows.

"The idea is that you come in through the entry door, and you get a glimpse into the outdoor space, and you are kind of enticed by it," Cole Pofahl said.

While the three disappearing glass walls are both Jim and Cole Pofahl's favorite feature, the home's attractions don't end there. With a media room, gourmet kitchen, four bedrooms, a casita and attractive central corridors, it is also a very livable residence.

"We spent a lot of time thinking about how you are actually going to live in the house," Cole Pofahl said.

With a split floor plan offering privacy for the master suite, they created two central corridors across the home with one large space for the dining room, kitchen and great room. One side of the floor plan contains the media room, casita and Jack-and-Jill bedroom, while the other contains the master bedroom, extensive master bathroom and three-car garage.

Connie Hines, owner of Connie Hines Interior Design, created the home's attractive accents and finishing touches. This includes movie theater-style cloth panels in the media room, shelves carrying on the theme of the entrance's square windows, wrought-iron accents and many of the home's contrasting colors.

"I think the media room did take a really nice turn with the fabric panels," Hines said. "The whole idea is to go in there and have a real pleasurable time watching the movie."

"I appreciated the fact that they gave me the house and let me massage the interior elements so that it carried the tiles and the things that I wanted to use."

She added that she tried to keep an "earthy feel" when it came to the tile work and gave it an organic look to go along with the outdoor elements.

With so much put into the home's main living areas, Jim and Cole Pofahl knew it wouldn't be complete without a stunning master bedroom. Running together into one large, luxurious space, the master bedroom and bathroom are separated by a double fireplace and seating area.

They cleverly added privacy to the master bathroom's

large walk-in shower using an outdoor garden surrounded by high walls.

"It's a feature of the house that people absolutely loved," Jim Pofahl said of the master shower.

After building such a talked-about home in the Picacho Mountain subdivision, they said their next challenge will be outdoing themselves.

"What our challenge is going to be is to continue to raise the bar for ourselves," Jim Pofahl said. "This being our first entry into the marketplace, we certainly believed in everything that Picacho Mountain was doing as a development, and we also went out into the marketplace and selected a team of individuals that played a very key role in the design of this house."

"We tried to push the envelope here to see how close we could keep the natural landscape to the house," Cole Pofahl said.



No outdoor space of this magnitude would be complete without a custom barbecue grill for those backyard barbecues.

PHOTOS BY  
STEVE  
MACINTYRE

In order to make the master bedroom and bathroom "flow and be cohesive," designer Connie Hines added an elegant faux finish and stone work to the fireplace and transitioned to stronger colors in the bathroom.

## Details

**Address:** 7053 Calle Estancias

**Square Footage:** 4,020

**Bedrooms:** Four

**Bathrooms:** Three

**Fireplaces:** Three

**Price:** \$1.1 million

**Special Features:** With over 1,000 square feet of tiled patios and disappearing glass walls, this home is enhanced by its outdoor spaces and open feel.

**For more information:** Contact Elaine Socolofsky Szalay at 650-5151.

## Home Sales Scoreboard

LAS CRUCES AREA

	This Week	Last Week	Same Week Last Year
Homes Sold New	5	3	12
Homes Sold Existing	20	7	24
Pending Home Sales (All)	211	225	394

	This Week	Last Week	Same Week Last Year
Median Price New	\$179,570	\$237,000	\$237,750
Median Price Existing	\$194,125	\$142,500	\$187,750

	This Week	Last Week	Same Week Last Year
Average Days on Market (All)	161	133	128

	This Week	Last Week	Same Week Last Year
Total Homes on Market (All)	1,641	1,627	1,526
Real Estate Agents	613	613	652

"Homes" include detached single-family homes, townhomes and condominiums

Source: Las Cruces Multiple Listing Service (MLS)\* for the period 5/12/08 - 5/18/08  
\* MLS is wholly owned by the Las Cruces Association of Realtors  
\*\* Unknown per LCAR